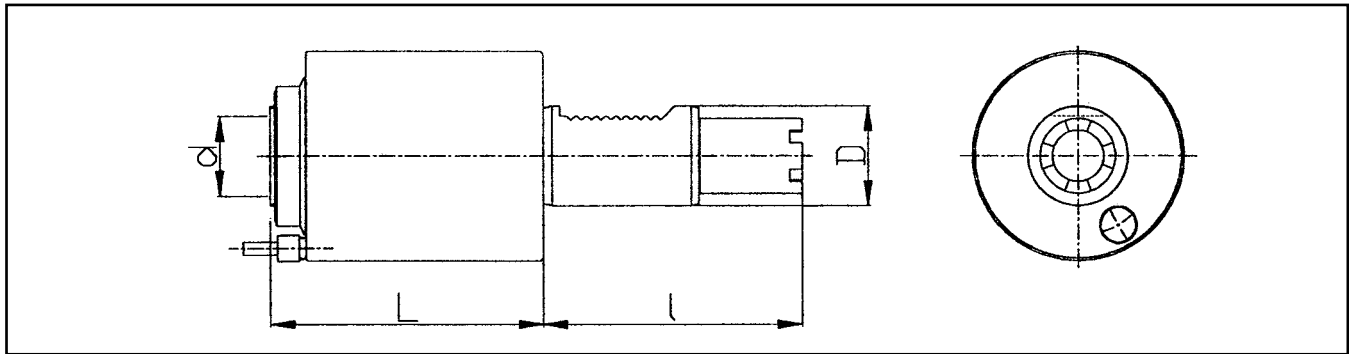
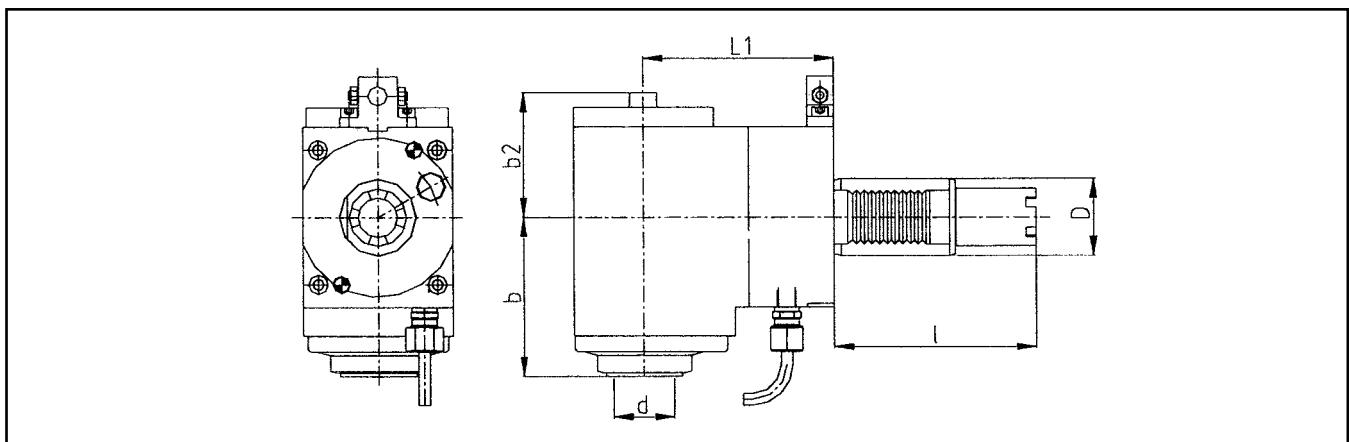


HAAS DIN 69880 VDI Axial Drilling And Milling Heads



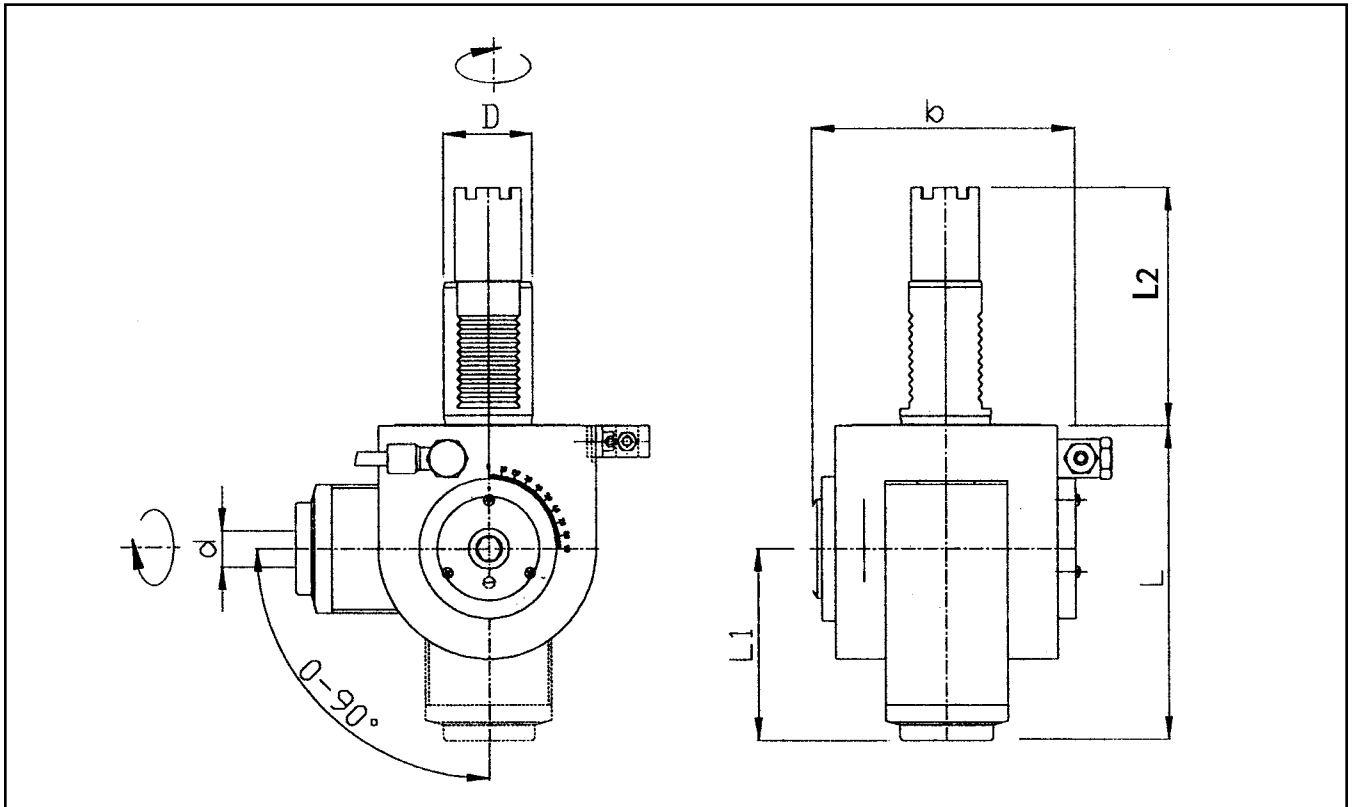
ORDER NO.	D (mm)	HAAS TURRET	VDI TURRET	1 (mm)	d	L (mm)	RPM Max	Ratio	Nm	Kg.
HE40A2090	40	-	SL-20/30	104.85 (4.128")	ECX/ER32	110	6000	1:1	50	4.0
HE40A2091	40	SL-20/30	SL-40/TL-15	117.55 (4.628")	ECX/ER32	110	6000	1:1	50	4.0
HE40A2092	40	SL-40	-	130.25 (5.128")	ECX/ER32	110	6000	1:1	50	4.1

Radial Drilling And Milling Heads



ORDER NO.	D (mm)	HAAS TURRET	VDI TURRET	1 (mm)	d	L1 (mm)	b (mm)	b2 (mm)	RPM Max	Ratio	Nm	Kg.
HE40B2090	40	-	SL-20/30	104.85 (4.128")	ECX/ER32	100	83	65	6000	1:1	50	6.8
HE40B2091	40	SL-20/30	SL-40/TL-15	117.55 (4.628")	ECX/ER32	100	83	65	6000	1:1	50	6.8
HE40B2092	40	SL-40	-	130.25 (5.128")	ECX/ER32	100	83	65	6000	1:1	50	6.9

HAAS DIN 69880 VDI Universal Angle Drilling & Milling Heads



ORDER NO.	D (mm)	HAAS TURRET	VDI TURRET	L2 (mm)	d	L (mm)	L1 (mm)	b (mm)	RPM Max	Ratio	Nm	Kg.
HE40E1690	40	-	SL-20/30	104.85 (4.128")	ECX/ER25	140	85	116	6000	1:1	25	6.8
HE40E1691	40	SL-20/30	SL-40/TL-15	117.55 (4.628")	ECX/ER25	140	85	116	6000	1:1	25	6.8
HE40E1692	40	SL-40	-	130.25 (5.128")	ECX/ER25	140	85	116	6000	1:1	25	6.9