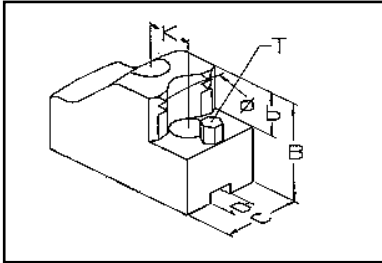


Adjustagrip Hard Top Jaws

To Suit Howa, Kitagawa & Matsumoto Power Chucks



To suit power chucks
60° Serrations
External Ø Clamping Type
Material: Steel: 590M17

Techleader Part No.	B	C	D	K	b	T	Serrations	Weight Kg/Set	Chuck Ø	CHUCK TYPES – GRIPPING RANGE								
										HOWA			KITAGAWA			MATSUMOTO (MMK)		
										H07MA	H027M	H037M	BA/H0B/H0H	B200	NL	N/NA	H/HA	ZA
LA 03	49	40	12	20	20	M6	1.5 X 60°	1.7	165	26-49	26-44	26-44		26-47	30-46	26-46		
LA 04								1.4		39-69	32-63	41-63	31-62	37-67	46-65	45-65		
LA 06								1.4		52-83	50-77	55-77	50-77	50-81	63-80	59-79		
LA 07								1.4		66-98	64-92	69-92	64-91	64-96	77-94	73-94		
LA 09								1.2		82-114	74-108	85-108	73-108	80-112	93-111	90-110		
LB 03	49	40	14	25	20	M6	1.5 X 60°	1.9	210	37-75	*26-71	*28-71	25-65	31-68	44-67	42-69	40-71	31-74
LB 06								1.8		66-102	*55-99	*57-99	54-93	60-96	72-98	69-97	69-99	60-101
LB 09								1.7		94-132	*82-128	*85-128	81-121	87-125	97-125	97-126	97-128	88-130
LB 12								1.7		121-159	*108-155	*111-155	108-149	114-152	125-151	125-152	124-155	115-158
LC 04	59	40	16	30	25	M8	1.5 X 60°	2.9	254/	40-100	*41-90	*48-86	41-81	44-85	43-83	42-91	52-92	43-88
LC 08								2.7	305	77-141	*78-130	*86-128	78-121	82-125	80-123	79-131	89-132	80-128
LC 13								2.6		120-185	*121-174	*128-172	121-165	125-169	123-167	122-175	133-176	123-171
LC 17								2.6		163-229	*164-218	*172-214	164-209	168-212	166-211	165-219	176-220	166-215
LD 05	59	50	18	30	25	M8	1.5 X 60°	4.5	304	53-128	*44-119	*54-119	46-114		55-119	51-117	50-126	55-127
LD 11								3.5		109-188	*97-179	*111-179	102-174		112-179	107-177	107-186	112-187
LD 17								3.1		173-253	*160-244	*175-244	165-239		176-244	171-241	170-251	176-252
LD 23								3.5		236-316	*223-307	*238-307	228-302		239-307	234-305	233-314	239-315
LE 05	59	50	21	30	25	M8	1.5 X 60°	4.4	304		†43-114	†50-114		48-112				
LE 10								3.4			†91-171	†104-171		102-168				
LE 16								3.0			†154-236	†167-236		165-233				
LE 23								3.4			†221-303	†234-303		232-300				
LF 05	79	60	22	43	33	M8	1.5 X 60°	9.3	380				50-108					
LF 10								8.3					99-162					
LF 16								6.0					160-224					
LF 22								5.6					220-285					
LF 28								6.0					279-345					
LF 34								7.8					339-404					

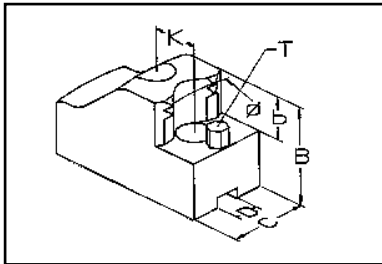
* For the jaws in these ranges to fit, special T-Nuts are required. Types GA08, GA10 & GA12.

† For the jaws in these ranges, standard T-Nuts must be split

Adjustagrip Jaws are available on request in special sizes or to suit other chuck types.

Adjustagrip Hard Top Jaws

To Suit Pratt Burnerd, Schunk & SMW-Autoblok Power Chucks



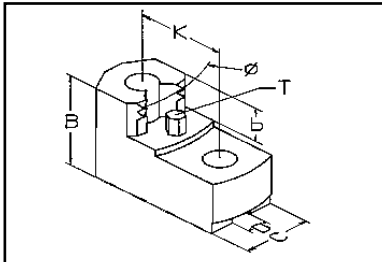
To suit power chucks
60° Serrations
External Ø Clamping Type
Material: Steel: 590M17

CHUCK TYPES – GRIPPING RANGE

Techleader Part No.	B	C	D	K	b	T	Serrations	Weight Kg/Set	Chuck Ø	PRATT BURNERD				SCHUNK		SMW - AUTOBLOK				
										INT'L KB	HSQC KB	INTERNATIONAL	HSQC	HSL	ROTA NCK	BB-M	BH-M	AL-M	AN-M	
LA 03 LA 04 LA 06 LA 07 LA 09	49	40	12	20	20	M6	1.5 X 60°	1.7 1.4 1.4 1.4 1.2	150	27-37 36-56 50-71 64-85 80-102										
LA 03 LA 04 LA 06 LA 07 LA 09	49	40	12	20	20	M6	1.5 X 60°	1.7 1.4 1.4 1.4 1.2	165/ 170/ 175	34-49 53-68 67-83 82-98 97-114		24-46 41-65 55-80 69-94 85-111	30-64 50-78 64-92 72-109	34-59 53-78 67-93 81-108 98-124	26-47 35-67 50-81 71-96 80-112	33-64 52-83 66-98 80-112 97-129	27-52 41-71 55-86 69-101 85-117	27-54 45-79 58-88 73-103 89-119	27-52 43-71 56-86 70-100 87-117	
LA 03 LA04 LA 06 LA 07 LA 09	49	40	12	20	20	M6	1.5 X 60°	1.7 1.4 1.4 1.4 1.2	210	62-88 82-107 96-122 111-137 127-153										
LB 03 LB 06 LB 09 LB 12	49	40	14	25	20	M6	1.5 X 60°	1.9 1.8 1.7 1.7	210		38-68 66-96 94-125 121-153	39-69 68-97 96-126 123-153	25-72 50-100 75-129 102-157	45-79 73-106 101-135 129-163	33-98 62-125 90-154 116-182	46-76 74-103 102-132 130-160	32-75 60-102 88-132 115-159	45-77 74-105 102-134 129-162	42-74 70-101 98-130 125-158	
LC 04 LC 06 LC 08 LC 10 LC 13 LC 15 LC 17	59	40	16	30	25	M8	1.5 X 60°	2.9 2.9 2.7 2.7 2.6 2.6 2.6	254/ 265/ 305	58-100 97-140 140-185 184-228	39-103 69-143 112-188 155-231	43-84 80-124 123-168 166-212	38-91 60-131 102-175 145-219	49-98 87-138 125-202 174-226	45-117 82-158 140-167 168-246	58-83 78-103 97-123 117-143 140-167 160-187 184-210	48-82 68-102 86-122 106-142 130-166 150-186 173-209	53-87 73-107 92-128 112-148 135-172 155-192 179-215	49-83 69-103 87-123 107-143 131-167 151-187 174-210	
LD 05 LD 11 LD 17 LD 23	59	50	18	30	25	M8	1.5 X 60°	4.5 3.5 3.1 3.5	304/ 305/ 315	61-118 118-180 180-245 245-307	44-125 88-185 147-250 210-314	57-124 114-184 178-249 241-312		67-138 125-198 189-263 252-327	61-160 119-220 183-286 246-349					
LE 05 LE 07 LE 10 LE 13 LE 16 LE 20 LE 23	59	50	21	30	25	M8	1.5 X 60°	4.4 4.0 3.4 3.2 3.0 3.2 3.4	304/ 315							89-125 117-153 145-181 175-211 210-246 243-279 277-314	60-126 115-182 179-246 246-315	54-131 109-187 172-252 239-320	49-124 103-181 166-246 233-313	
LF 05 LF 10 LF 16 LF 22 LF 28 LF 34	79	60	22	43	33	M8	1.5 X 60°	9.3 8.3 6.0 5.6 6.0 7.8	380		59-117 110-171 171-234 232-295 291-354 350-414	47-117 82-171 137-234 197-295 255-354 315-414								

Adjustagrip Hard Top Jaws

To Suit Howa, Kitagawa & Matsumoto Power Chucks



To suit power chucks
60° Serrations
Internal Ø Clamping Type
Material: Steel: 590M17

Techleader Part No.	B	C	D	K	b	T	Serrations	Weight Kg/Set	Chuck Ø	CHUCK TYPES – GRIPPING RANGE								
										HOWA			KITAGAWA			MATSUMOTO (MMK)		
										H07MA	H027M	H037M	BA/HOB/HOH	B200	NL	N/NA	H/HA	ZA
MA 05	49	40	12	20	20	M6	1.5 X 60°	1.5	165	45-71		45-65		45-69	51-67	47-67		
MA 06								1.4		51-82	47-76	54-76	47-76	49-80	62-80	58-78		
MA 07								1.3		70-102	67-96	72-96	67-95	68-99	80-101	77-99		
MA 09								1.1		92-124	83-118	95-118	83-117	90-122	101-121	99-120		
MB 06	49	40	14	25	20	M6	1.5 X 60°	1.9	210	55-92	*50-88	*50-88	50-82	50-85	61-89	59-89	58-88	50-91
MB 08								1.8		84-122	*72-118	*75-118	72-112	78-115	89-120	80-120	87-120	78-120
MB 11								1.7		117-155	*105-151	*108-151	104-145	110-148	120-152	120-151	120-151	111-155
MB 14								1.7		146-185	*134-181	*137-181	133-174	139-178	152-177	151-177	149-181	140-184
MC 06	59	40	16	30	25	M8	1.5 X 60°	2.7	254/	56-119	*57-109	*65-105	57-100	61-103	59-102	58-109	68-111	59-107
MC 10								2.5	265/	95-159	*96-149	*104-145	96-140	100-143	98-142	97-149	108-151	98-147
MC 14								2.3	305	136-201	*137-190	*145-186	137-181	140-185	139-183	138-191	149-192	139-188
MC 18								2.2		175-240	*176-230	*184-226	176-221	180-224	178-223	177-231	188-232	178-228
MD 08	59	50	18	30	25	M8	1.5 X 60°	3.9	304	81-159	*74-150	*83-150	74-145		84-150	79-148	79-157	83-158
MD 14								3.0		142-221	*129-212	*144-212	134-207		145-212	140-210	139-219	144-220
MD 20								3.0		203-283	*189-273	*204-273	195-269		205-274	200-271	200-280	205-281
ME 08	59	50	21	30	25	M8	1.5 X 60°	3.9	304		†74-148	†80-148		78-145				
ME 14								3.0			†131-212	†144-212		142-209				
ME 20								3.0			†189-271	†203-271		201-269				
MF 10	79	60	22	43	33	M8	1.5 X 60°	8.8	380				100-162					
MF 16								7.1					160-224					
MF 22								4.1					222-287					
MF 28								4.1					280-345					

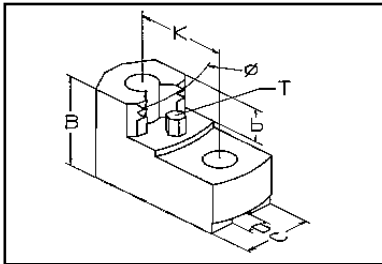
* For the jaws in these ranges to fit, special T-Nuts are required. Types GA08, GA10 & GA12.

† For the jaws in these ranges, standard T-Nuts must be split

Adjustagrip Jaws are available on request in special sizes or to suit other chuck types.

Adjustagrip Hard Top Jaws

To Suit Pratt Burnerd, Schunk & SMW-Autoblok Power Chucks



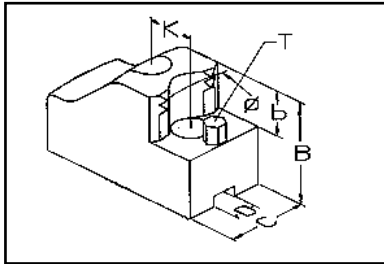
To suit power chucks
60° Serrations
Internal Ø Clamping Type
Material: Steel: 590M17

CHUCK TYPES – GRIPPING RANGE

Techleader Part No.	B	C	D	K	b	T	Serrations	Weight Kg/Set	Chuck Ø	CHUCK TYPES – GRIPPING RANGE										
										PRATT BURNERD				SCHUNK		SMW - AUTOBLOK				
										INT'L. KB	HSQC KB	INTERNATIONAL	HSQC	HSL	ROTA NCK	BB-M	BH-M	AL-M	AN-M	
MA 05 MA 06 MA 07 MA 09	49	40	12	20	20	M6	1.5 X 60°	1.5 1.4 1.3 1.1	150	46-58 48-70 68-89 89-111										
MA 05 MA 06 MA 07 MA 09	49	40	12	20	20	M6	1.5 X 60°	1.5 1.4 1.3 1.1	165/ 170/ 175	55-70 66-83 83-101 108-124		45-67 54-79 73-98 95-120	47-77 67-96 82-119	55-80 66-92 85-111 107-134	47-80 68-99 84-116 75-122	54-85 65-97 84-116 104-139	46-73 54-85 72-104 95-127	47-75 58-87 76-107 99-129	46-73 55-85 74-104 96-126	
MA 05 MA 06 MA 07 MA 09	49	40	12	20	20	M6	1.5 X 60°	1.5 1.4 1.3 1.1	210	84-109 95-121 115-141 137-163										
MB 06 MB 08 MB 11 MB 14	49	40	14	25	20	M6	1.5 X 60°	1.9 1.8 1.7 1.7	210		55-85 85-115 115-149 147-178	57-86 86-119 119-149 148-179	50-89 68-119 98-153 127-182	62-96 92-126 125-159 154-189	51-114 80-144 113-178 142-207	63-93 93-123 126-155 155-186	51-92 79-122 111-155 140-185	63-94 92-125 125-158 155-187	59-90 89-121 121-154 151-183	
MC 06 MC 08 MC 10 MC 12 MC 14 MC 16 MC 18	59	40	16	30	25	M8	1.5 X 60°	2.7 2.5 2.5 2.4 2.3 2.3 2.2	250/ 254/ 265	75-119 115-159 156-201 195-240	54-122 87-162 128-203 167-243	59-103 98-143 139-184 178-224	54-110 77-150 117-191 157-231	66-117 105-157 142-218 186-238	62.137 100-177 142-218 181-258	75-101 95-121 115-141 135-161 155-183 175-201 196-222	65-100 85-120 104-140 124-160 145-182 165-200 185-221	71-106 91-126 110-146 130-161 151-188 171-195 191-227	66-101 86-121 105-141 125-162 146-183 166-201 186-222	
MD 08 MD 14 MD 20	59	50	18	30	25	M8	1.5 X 60°	3.9 3.0 3.0	304/ 305/ 315	91-151 151-212 212-273	74-156 116-218 176-280	86-155 147-217 207-278		97-170 158-232 219-293	90-192 151-254 212-316					
ME 08 ME 10 ME 14 ME 18 ME 20 ME 24	59	50	21	30	25	M8	1.5 X 60°	3.9 3.5 3.0 3.0 3.0 3.1	315						122-158 154-190 186-222 215-251 245-282 275-312	92-159 156-223 215-283	85-164 149-228 208-288	79-158 143-222 201-282		
MF 10 MF 16 MF 22 MF 28	79	60	22	43	33	M8	1.5 X 60°	8.8 7.1 4.1 4.1	380			101-171 171-234 234-297 291-354	96-171 137-234 199-299 256-355							

Adjustagrip Hard Top Jaws

To Suit Autoblok Power Chucks

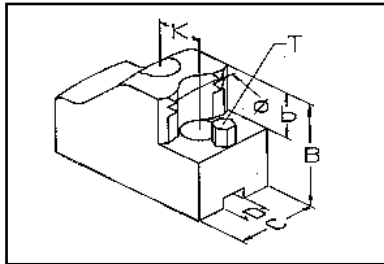


To suit power chucks
90° Serrations
External Ø Clamping Type
Material: Steel: 590M17

Techleader Part No.	B	C	D	K	b	T	Serrations	Weight Kg/Set	Chuck Ø	CHUCK TYPES – GRIPPING RANGE				
										AUTOBLOK				
										IDN/HDN	GDN	GHD/FC	BHD	BBD
IB 03	49	40	17	22	20	M6	1/16"X90°	2.7	200/210					
IB 04								2.3		33-68	34-71	34-71	34-70	41-73
IB 05								2.1		59-96	60-98	60-98	55-97	68-100
IB 08								2.1		86-125	88-127	88-127	82-126	96-129
IB 11								2.0		115-154	116-157	116-157	111-156	125-158
IB 14								1.9		144-184	146-186	146-186	140-185	155-188
IB 03	49	40	17	22	20	M6	1/16"X90°	2.7	220/250					
IB 04								2.3		37-85				
IB 05								2.1		64-113				
IB 08								2.1		92-142				
IB 11								2.0		121-172				
IB 14								1.9		150-202				
IC 04	59	50	21	25	25	M8	1/16"X90°	3.9	250					
IC 05								3.3		45-98	44-96	44-96	45-94	54-98
IC 08								2.7		88-143	87-141	87-141	89-139	98-140
IC 13								2.4		137-194	136-191	136-191	138-189	147-190
IC 18								2.8		188-245	187-243	187-243	188-241	198-242
IC 04	59	50	21	25	25	M8	1/16"X90°	3.9	250/305			50-110		
IC 05								3.3			52-97			
IC 08								2.7			96-145	105-190		
IC 13								2.4			145-195	155-242		
IC 18								2.8			195-244	206-293		
IC 04	59	50	21	25	25	M8	1/16"X90°	3.9	315	50-125	50-120		50-118	66-117
IC 05								3.3						100-152
IC 08								2.7		110-206	115-200		117-198	146-197
IC 13								2.4		160-257	165-252		167-250	196-249
IC 18								2.8		211-309	216-303		218-301	248-300
IC 04	59	50	21	25	25	M8	1/16"X90°	3.9	400	65-208		65-208		
IC 05								3.3						
IC 08								2.7		145-288		145-288		
IC 13								2.4		195-340		195-340		
IC 18								2.8		247-392		247-392		
ID 06	79	60	25.5	35	33	M8	3/32"X90°	9.0	500			90-244		
ID 13								6.3				175-333		
ID 21								4.8				261-420		
ID 30								6.6				350-509		
ID 06	79	60	25.5	35	33	M8	3/32"X90°	9.0	630			91-246		
ID 13								6.3				175-462		
ID 21								4.8				261-549		
ID 30								6.6				350-639		

Adjustagrip Hard Top Jaws

To Suit Schunk & SMW-Autoblok Power Chucks



To suit power chucks
90° Serrations
External Ø Clamping Type
Material: Steel: 590M17

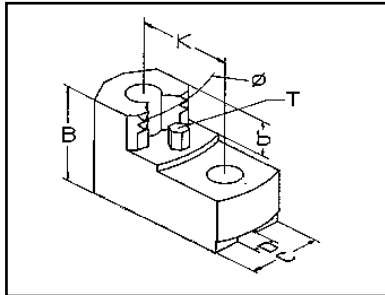
CHUCK TYPES – GRIPPING RANGE

Techleader Part No.	B	C	D	K	b	T	Serrations	Weight Kg/Set	Chuck Ø	SCHUNK						SMW - AUTOBLOK		
										TH-THF		HGS	HSL	ROTA NC/INCF		HF/K/HFKS	AN-D	AL-D
IA 03	49	40	17	19	20	M6	1/16" X 90°	1.8	160/165/200	41-76	67-113	45-72	36-64	39-63				
IA 05								1.4		60-95	86-132	64-91	55-83	58-82				
IA 07								1.5		81-118	109-154	86-114	76-106	79-104				
IA 09								1.6		103-140	131-177	108-136	89-128	101-126				
IA 11								1.5		125-162	153-200	130-158	120-150	123-149				
IA 03	49	40	17	19	20	M6	1/16" X 90°	1.8	200/210/250		95-142	59-104		47-97				
IA 05								1.4			114-161	78-123		66-116				
IA 07								1.5			136-183	100-146		88-138				
IA 09								1.6			158-206	122-168		110-161				
IA 11								1.5			181-228	145-191		132-183				
IB 03	49	40	17	22	20	M6	1/16" X 90°	2.7	200/210	34-77			35-69	35-59	35-62			
IB 04								2.3		39-89			44-81	38-70	41-74			
IB 05								2.1		66-116			71-108	65-97	68-101			
IB 08								2.1		94-145			99-137	92-126	96-130			
IB 11								2.0		123-175			128-166	121-156	125-160			
IB 14								1.9		152-205			158-196	151-185	155-189			
IC 04	59	50	21	25	25	M8	1/16" X 90°	3.9	250	34-83		35-75	35-75	34-63	35-60	35-65		
IC 05								3.3		52-118		51-110	49-110	51-97	51-94	55-99		
IC 08								2.7		96-163		95-155	93-155	95-142	94-139	99-144		
IC 11								2.5						120-167	120-164	125-169		
IC 13								2.4		145-214		144-206	142-206	144-193	144-190	149-195		
IC 16								2.6						170-219	170-216	175-220		
IC 18								2.8		196-265		195-257	193-257	195-244	195-241	200-246		
IC 04	59	50	21	25	25	M8	1/16" X 90°	3.9	315	49-136	60-135	46-126	41-135	37-126	35-116	39-122		
IC 05								3.3		82-172	94-170	78-161	72-170	68-161	64-151	70-158		
IC 08								2.7		127-217	139-216	123-206	117-215	113-206	108-197	114-203		
IC 13								2.4		177-268	190-267	174-257	167-267	163-257	158-248	165-254		
IC 18								2.8		229-320	241-319	225-309	218-318	214-309	209-299	216-306		
ID 06	79	60	25.5	35	33	M8	3/32" X 90°	9.0	400	69-154	64-157		60-162	61-155	62-134	66-139		
ID 08								7.4							105-177	109-182		
ID 13								6.3		153-242	148-245		143-249	144-243	145-221	150-227		
ID 18								5.4							187-263	192-269		
ID 21								4.8		238-329	233-332		228-336	229-330	230-308	236-314		
ID 25								5.2							275-353	280-360		
ID 30								6.6		327-418	322-421		317-426	318-419	319-397	324-403		
ID 06	79	60	25.5	35	33	M8	3/32" X 90°	9.0	500	115-272	96-247		111-259	98-249				
ID 13								6.3		202-360	182-336		198-347	185-337				
ID 21								4.8		289-447	268-423		284-435	271-424				
ID 30								6.6		378-537	357-512		373-524	360-514				



Adjustagrip Hard Top Jaws

To Suit Autoblok Power Chucks

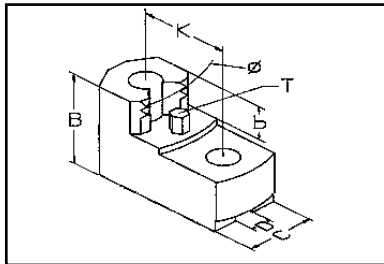


To suit power chucks
90° Serrations
 Internal Ø Clamping Type
 Material: Steel: 590M17

Techleader Part No.	B	C	D	K	b	T	Serrations	Weight Kg/Set	Chuck Ø	CHUCK TYPES – GRIPPING RANGE				
										AUTOBLOK				
										IDN/HDN	GNDN	GND/FC	BHD	BBD
JB 06	49	40	17	22	20	M6	1/16"X90°	1.8	200/210	62-101	64-103	64-103	58-102	72-105
JB 09								1.8		94-133	95-135	95-135	89-134	104-137
JB 12								1.7		125-164	126-166	126-166	120-165	135-168
JB 06	49	40	17	22	20	M6	1/16"X90°	1.8	220/250	68-118				
JB 09								1.8		100-150				
JB 12								1.7		131-182				
JC 08	59	50	21	25	25	M8	1/16"X90°	3.9	250	81-117	81-114	81-114	81-114	81-113
JC 10								2.8		114-170	113-168	113-168	114-166	124-167
JC 15								2.6		165-222	163-219	163-219	165-217	175-218
JC 08	59	50	21	25	25	M8	1/16"X90°	3.9	250/305		81-115	81-164		
JC 10								2.8			122-169	132-218		
JC 15								2.6			173-220	183-269		
JC 08	59	50	21	25	25	M8	1/16"X90°	3.9	315	83-180	88-174		89-172	119-173
JC 10								2.8		137-233	142-228		144-226	173-225
JC 15								2.6		188-285	192-279		194-277	224-276
JC 08	59	50	21	25	25	M8	1/16"X90°	3.9	400	118-263		118-263		
JC 10								2.8		172-316		172-316		
JC 15								2.6		223-368		223-368		
JD 10	79	60	25.5	35	33	M8	3/32"X90°	8.6	500			135-291		
JD 17								6.7				212-370		
JD 25								4.0				291-450		
JD 10	79	60	25.5	35	33	M8	3/32"X90°	8.6	630			135-420		
JD 17								6.7				212-499		
JD 25								4.0				291-579		

Adjustagrip Hard Top Jaws

To Suit Schunk & SMW-Autoblok Power Chucks



To suit power chucks
90° Serrations
Internal Ø Clamping Type
Material: Steel: 590M17

Techleader Part No.	B	C	D	K	b	T	Serrations	Weight Kg/Set	Chuck Ø	CHUCK TYPES – GRIPPING RANGE						
										SCHUNK			SMW - AUTOBLOK			
										TH-THF	HGS	HSL	ROTA NC/INCF	HFK/HFKS	AN-D	AL-D
JA 05 JA 07 JA 09 JA 11	49	40	17	19	20	M6	1/16" X 90°	1.7 1.6 1.5 1.5	160/165/200	61-97 83-120 104-141 125-162	88-134 110-156 132-178 153-200	66-93 88-115 109-137 130-158	57-85 78-107 99-129 120-150	59-84 81-106 102-127 123-149		
JA 05 JA 07 JA 09 JA 11	49	40	17	19	20	M6	1/16" X 90°	1.7 1.6 1.5 1.5	200/210/250		115-163 138-185 159-207 181-228	80-125 102-148 123-169 145-191		68-118 90-140 111-162 132-183		
JB 06 JB 09 JB 12	49	40	17	22	20	M6	1/16" X 90°	1.8 1.8 1.7	200/210	70-121 102-153 133-185			75-113 107-145 138-176	68-102 100-134 131-165	72-106 104-138 134-169	
JC 08 JC 09 JC 10 JC 12 JC 15	59	50	21	25	25	M8	1/16" X 90°	3.9 3.1 2.8 2.6 2.6	250	81-136 122-190 172-241		81-128 121-182 171-233	81-128 119-182 169-233	81-120 120-172 172-221	81-112 101-144 121-166 156-191 171-217	81-117 101-149 126-171 161-196 176-222
JC 08 JC 10 JC 15	59	50	21	25	25	M8	1/16" X 90°	3.9 2.8 2.6	315	100-191 154-244 205-296	112-190 166-243 218-295	96-180 150-234 201-285	90-190 144-243 195-295	85-180 139-234 190-285	81-170 135-224 186-276	87-177 141-230 192-282
JD 10 JD 17 JD 25	79	60	25.5	35	33	M8	3/32" X 90°	8.6 6.7 4.0	400	113-201 189-279 267-359	108-203 184-282 262-361		103-208 179-287 257-366	104-202 180-280 259-360	105-180 181-258 259-337	110-185 186-264 265-343
JD 10 JD 17 JD 25	79	60	25.5	35	33	M8	3/32" X 90°	8.6 6.7 4.0	500	161-318 239-397 318-477	141-294 219-373 298-453		157-306 234-385 313-464	144-295 221-374 300-454		

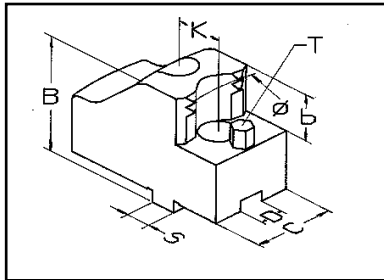
Adjustagrip Jaws are available on request in special sizes or to suit other chuck types.

Adjustagrip Hard Top Jaws

For Slot/Tenon Quick Jaw Change Chucks

FOR SPECIAL SIZE ADJUSTAGRIP JAWS AND FOR CHUCK TYPES NOT LISTED

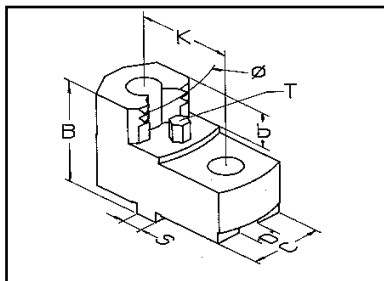
If the standard listed type is not suitable, please fill in the drawing details below and return to us for a quotation.



EXTERNAL GRIPPING

CHUCK MAKE AND TYPE:

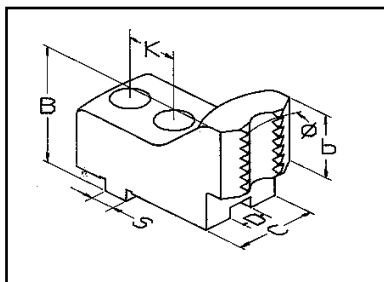
B	
C	
D	
K	
S	
b	
Ø	



INTERNAL GRIPPING

CHUCK MAKE AND TYPE:

B	
C	
D	
K	
S	
b	
Ø	



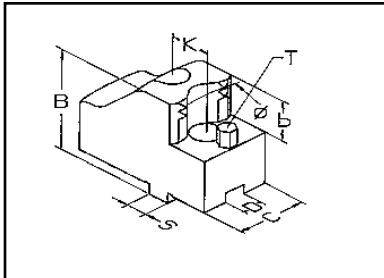
BAR GRIPPING

CHUCK MAKE AND TYPE:

B	
C	
D	
K	
S	
b	
Ø	

Adjustagrip Hard Top Jaws

For Slot/Tenon Quick Jaw Change Chucks



External Ø Clamping Type
Material: Steel: 590M17

Techleader Part No.	B	C	D	K	S	b	T	Weight KG/set
LY10	49	30	8	32	18	20	M6	1.3
LY 11								1.3
LY 12								1.2
LY 13								1.2
LY 14								1.1
LY 15								1.1
LY 16								1.4
LY 17	1.4							
LY20	49	30	10	40	20	20	M6	1.3
LY 21								1.3
LY 22								1.2
LY 23								1.2
LY 24								1.2
LY 25								1.2
LY 30	59	40	12	40	20	25	M6	2.4
LY 31								2.4
LY 32								2.3
LY 33								2.3
LY 34								2.0
LY 35								2.0
LY 40	59	50	12	54	26	25	M8	4.0
LY 41								4.0
LY 42								3.2
LY 43								3.2
LY 50	78	50	18	60	30	33	M8	5.6
LY 51								5.6
LY 52								5.1
LY 53								5.1

These jaws suit the following quick jaw change chuck types:

BERG	KHNC
FORKARDT	KTNC, KTNCs, KTNCV, FNC
ROHM	DURO NC
SCHUNK	THW
SMW	KNCS
SMW-AUTOBLOK	KNCS-N

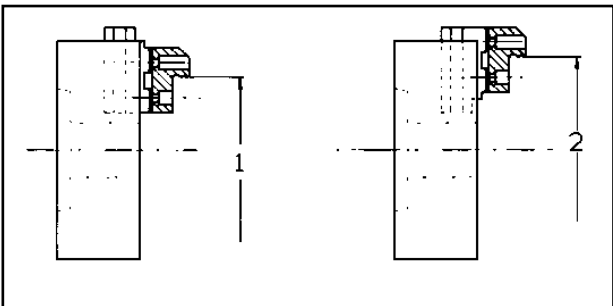
These jaws will also fit Gamet MX, Kitagawa QJ and Reishauer RHU chucks. Grip ranges are available on request. Internal and bar gripping type jaws are also available on request. A grip range table can be supplied if required.

Adjustagrip Hard Top Jaws

**For Slot/Tenon Quick Jaw Change Chucks
To Suit Schunk THW Chucks Material: Steel: 590M17
External Gripping**

THW 165-37				THW 210-52				THW 250-65				THW 265-71				THW 315-86				THW 400-120			
GRIP RANGE Ø	Max Swing	Pos	Part No.	GRIP RANGE Ø	Max Swing	Pos	Part No.	GRIP RANGE Ø	Max Swing	Pos	Part No.	GRIP RANGE Ø	Max Swing	Pos	Part No.	GRIP RANGE Ø	Max Swing	Pos	Part No.	GRIP RANGE Ø	Max Swing	Pos	Part No.
29-33	182	1	LY10	27-30	247	1	LY20	33-38	296	1	LY30	33-38	307	1	LY30	36-42	345	1	LY30	55-61	313	1	LY40
33-37			LY11	30-32			LY21	37-42			LY31	37-42			LY31	41-47			LY31	61-67			LY41
37-41			LY10	31-37			LY20	41-47			LY30	41-47			LY30	46-52			LY30	65-71			LY40
41-46			LY11	36-41			LY21	46-52			LY31	46-52			LY31	50-56			LY31	71-77			LY41
46-50			LY10	40-45			LY20	51-57			LY30	51-57			LY30	56-62			LY30	75-81			LY40
50-54			LY11	44-50			LY21	56-62			LY31	56-62			LY31	61-67			LY31	81-87			LY41
54-60			LY12	49-54			LY20	61-67			LY30	61-67			LY30	66-72			LY30	85-91			LY40
60-64			LY13	53-59			LY21	66-72			LY31	66-72			LY31	71-77			LY31	91-98			LY41
64-69			LY12	58-63			LY20	71-78			LY30	71-78			LY30	76-83			LY30	95-101			LY40
69-73			LY13	62-68			LY21	77-83			LY31	77-83			LY31	81-88			LY31	101-108			LY41
73-78			LY12	67-73			LY20	82-88			LY30	82-88			LY30	87-93			LY30	106-112			LY40
78-82			LY13	71-77			LY21	87-94			LY31	87-94			LY31	92-98			LY31	112-119			LY41
81-85			LY14	76-81			LY23	92-98			LY33	92-98			LY33	98-104			LY30	116-123			LY40
85-90			LY15	80-86			LY22	98-104			LY32	98-104			LY32	103-109			LY31	123-129			LY41
90-95	LY14	85-91	LY23	103-109	LY33	103-109	LY33	108-115	LY33	127-133	LY40												
95-99	LY15	89-95	LY22	108-115	LY32	108-115	LY32	114-120	LY32	133-140	LY41												
99-104	LY14	94-100	LY23	114-120	LY33	114-120	LY33	118-125	LY33	138-144	LY40												
104-108	LY15	99-105	LY22	119-126	LY32	119-126	LY32	124-130	LY32	144-151	LY41												
109-113	LY14	103-109	LY23	124-131	LY33	124-131	LY33	129-136	LY33	148-156	LY40												
113-118	LY15	107-113	LY25	128-135	LY35	130-136	LY32	135-141	LY32	155-162	LY41												
118-124	194	1	LY16	112-118	LY24	134-140	LY34	135-142	LY33	140-147	LY33	159-166	LY40										
124-128			LY17	116-122	LY25	139-146	LY35	139-146	LY35	146-152	LY32	166-172	LY41										
128-133			LY16	121-127	LY24	145-151	LY34	145-151	LY34	151-158	LY33	170-176	LY42										
133-137			LY17	125-131	LY25	150-157	LY35	150-157	LY35	155-162	LY35	176-183	LY43										
137-142			LY16	130-136	LY24	156-162	LY34	156-162	LY34	161-167	LY34	181-187	LY42										
142-147			LY17	135-141	LY25	161-167	LY35	161-167	LY35	166-172	LY35	187-194	LY43										
147-151			LY16	140-146	LY24	166-173	LY34	166-173	LY34	171-178	LY34	192-198	LY42										
151-156			LY17	145-150	LY25	172-178	LY35	172-178	LY35	177-183	LY35	198-205	LY43										
155-160			212	2	LY16	149-155	LY24	175-182	LY34	177-184	LY34	182-189	LY34	202-209	LY42								
160-165					LY17	154-160	LY25	181-187	LY35	183-189	LY35	188-194	LY35	209-216	LY43								
165-169					LY16	159-165	LY24	186-193	LY34	186-193	LY34	193-200	LY34	213-220	LY42								
169-174					LY17	163-169	LY25	192-198	LY35	192-198	LY35	199-205	LY35	220-227	LY43								
							LY24	168-174	LY24	197-204	LY34	197-204	LY34	204-211	LY34	224-231	LY42						
							LY25	173-179	LY25	203-209	LY35	203-209	LY35	210-216	LY35	231-238	LY43						
								208-215	LY34	208-215	LY34	215-222	LY34	235-242	LY42								
								214-220	LY35	214-220	LY35	221-227	LY35	242-249	LY43								
								219-226	LY34	219-226	LY34	226-233	LY34	246-253	LY42								
								224-231	LY35	224-231	LY35	231-238	LY35	253-260	LY43								
								230-237	LY34	230-237	LY34	237-244	LY34	257-264	LY42								
								235-242	LY35	235-242	LY35	242-249	LY35	264-270	LY43								
									LY34	241-248	LY34	248-255	LY34	268-274	LY42								
									LY35	246-253	LY35	253-260	LY35	274-281	LY43								
										259-266	LY34	279-286	LY42										
										264-271	LY35	286-292	LY43										
										270-276	LY34	291-297	LY42										
										275-282	LY35	297-304	LY43										
										281-287	LY34	302-308	LY42										
										286-293	LY35	308-315	LY43										
												313-319	LY42										
												319-326	LY43										
												324-330	LY42										
												330-337	LY43										
												335-342	LY42										
												342-348	LY43										
												346-352	LY42										
												352-359	LY43										
												356-363	LY42										
												363-370	LY43										

BASE JAW POSITION



Adjustagrip Hard Top Jaws

**For Slot/Tenon Quick Jaw Change Chucks
To Suit SMW KNCS Chucks Material: Steel: 590M17
EXTERNAL GRIPPING**

KNCS 140-32			
GRIP RANGE Ø	Max Swing	Pos	Part No.
27-30	162	1	LY10
30-34			LY11
34-38			LY10
38-42			LY11
42-47			LY10
47-51			LY11
51-56			LY12
56-61			LY13
61-65			LY12
65-70			LY13
70-74			LY12
74-78			LY13
78-82			LY14
82-86			LY15
86-91			LY14
91-96			LY15
96-100			LY14
100-105			LY15
105-110			LY14
110-115			LY15
115-121	190	1	LY16
121-125			LY17
125-129			LY16
129-134			LY17
134-139			LY16
139-143			LY17
143-148			LY16
148-151			LY17

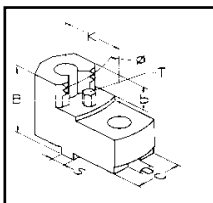
KNCS 160-32					
GRIP RANGE Ø	Max Swing	Pos	Part No.		
27-31	177	1	LY10		
31-34			LY11		
34-39			LY10		
39-43			LY11		
43-47			LY10		
47-52			LY11		
52-57			LY12		
57-61			LY13		
61-66			LY12		
66-70			LY13		
70-75			LY12		
75-78			LY13		
78-82			LY14		
82-87			LY15		
87-91			LY14		
91-96			LY15		
96-101			LY14		
101-105			LY15		
105-110	LY14				
110-115	LY15				
115-120	190	1	LY16		
120-125			LY17		
125-130			LY16		
130-134			LY17		
134-139			LY16		
139-144			LY17		
144-148			208	2	LY16
148-152					LY17
152-157					LY16
157-161					LY17
161-166	LY16				
166-170	LY17				

KNCS 175-40			
GRIP RANGE Ø	Max Swing	Pos	Part No.
27-30	186	1	LY10
30-33			LY11
32-37			LY10
36-41			LY11
41-46			LY10
45-50			LY11
49-54			LY10
54-59			LY11
59-64			LY12
63-68			LY13
68-73			LY12
72-78			LY13
77-82			LY12
81-87			LY13
85-90			LY14
89-94			LY15
94-99			LY14
98-104			LY15
103-108			LY14
108-113			LY15
112-118	LY14		
117-123	LY15		
123-128	199	1	LY16
127-133			LY17
132-137			LY16
137-142			LY17
141-147			LY16
146-151			LY17
151-156			LY16
155-161	LY17		
159-165	217	2	LY16
164-169			LY17
169-174			LY16
173-179			LY17

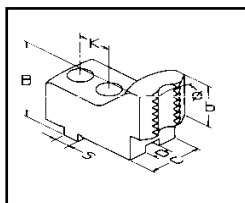
KNCS 200-41			
GRIP RANGE Ø	Max Swing	Pos	Part No.
30-35	235	1	LY20
34-39			LY21
38-43			LY20
42-48			LY21
47-52			LY20
51-57			LY21
56-61			LY20
60-66			LY21
65-70			LY23
69-75			LY22
74-79			LY23
78-84			LY22
83-88			LY23
87-93			LY22
92-97			LY23
96-101			LY25
100-106			LY24
105-110			LY25
110-115			LY24
114-120			LY25
119-125	LY24		
124-129	LY25		
129-134	273	2	LY24
133-139			LY25
138-144			LY24
143-148			LY25
147-153			LY24
152-157			LY25
157-162			LY24
161-167			LY25

KNCS 250-52			
GRIP RANGE Ø	Max Swing	Pos	Part No.
38-43	291	1	LY30
42-48			LY31
47-53			LY30
52-58			LY31
57-63			LY30
62-68			LY31
67-73			LY30
72-79			LY31
78-84			LY30
83-89			LY31
88-94			LY33
93-99			LY32
98-105			LY33
104-110			LY32
109-116			LY33
115-121			LY32
120-126			LY33
124-130			LY35
129-136			LY34
135-141			LY35
140-147	LY34		
145-152	LY35		
151-158	LY34		
156-163	LY35		
162-168	LY34		
167-174	LY35		
171-177	355	2	LY34
176-183			LY35
182-188			LY34
187-194			LY35
193-199			LY34
198-205			LY35
204-210			LY34
209-216			LY35
215-221			LY34
220-226			LY35
225-232	LY34		
231-237	LY35		

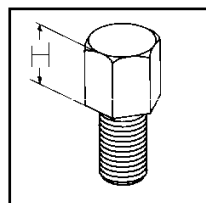
INTERNAL GRIPPING
Available on request



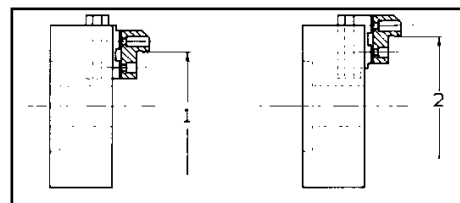
BAR GRIPPING
Available on request



WORKPIECE HEIGHT PINS



BASE JAW POSITION



Adjustagrip Hard Top Jaws

**For Slot/Tenon Quick Jaw Change Chucks
To Suit SMW KNCS Chucks Material: Steel: 590M17**
EXTERNAL GRIPPING

KNCS 260-65			
GRIP RANGE Ø	Max Swing	Pos	Part No.
38-43	302	1	LY30
42-48			LY31
47-53			LY30
52-58			LY31
57-63			LY30
62-68			LY31
67-73			LY30
72-79			LY31
78-84			LY30
83-89			LY31
88-95			LY30
93-100			LY31
98-105			LY33
104-110			LY32
109-116			LY33
115-121			LY32
120-126			LY33
125-132			LY32
131-137			LY33
135-141			LY35
140-147	LY34		
145-152	LY35		
151-158	LY34		
156-163	LY35		
162-168	LY34		
167-174	LY35		
173-179	LY34		
178-185	LY35		
182-188	366	2	LY34
187-194			LY35
193-199			LY34
198-205			LY35
204-210			LY34
209-216			LY35
215-221			LY34
220-226			LY35
225-232			LY34
231-237			LY35
236-243	LY34		
242-248	LY35		

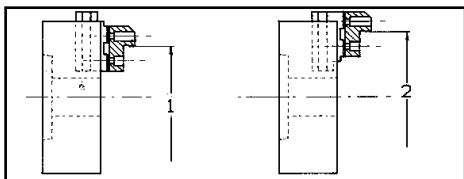
KNCS 315-77			
GRIP RANGE Ø	Max Swing	Pos	Part No.
36-42	344	1	LY30
40-46			LY31
45-51			LY30
50-56			LY31
55-61			LY30
60-67			LY31
65-72			LY30
71-77			LY31
76-82			LY30
81-88			LY31
86-93			LY30
92-98			LY31
97-104			LY30
102-109			LY31
108-115			LY30
113-120			LY31
118-125			LY33
124-130			LY32
129-136			LY33
134-141			LY32
140-146	LY33		
145-152	LY32		
151-157	LY33		
155-161	LY35		
160-167	LY34		
165-172	LY35		
171-178	LY34		
176-183	LY35		
182-189	LY34		
187-194	LY35		
193-200	LY34		
198-205	LY35		
204-211	432	2	LY34
209-216			LY35
215-221			LY34
220-227			LY35
226-232			LY34
231-238			LY35
237-243			LY34
242-249			LY35
248-254			LY34
253-260			LY35
259-265	LY34		
264-271	LY35		
269-276	LY34		
275-282	LY35		
280-287	LY34		
286-293	LY35		

KNCS 315-91			
GRIP RANGE Ø	Max Swing	Pos	Part No.
46-52	356	1	LY30
51-57			LY31
56-52			LY30
61-67			LY31
66-73			LY30
71-78			LY31
77-83			LY30
82-88			LY31
87-94			LY30
93-99			LY31
98-105			LY30
103-110			LY31
109-115			LY30
114-121			LY31
120-126			LY30
125-131			LY31
130-136			LY33
135-142			LY32
141-147			LY33
146-153			LY32
152-158	LY33		
157-164	LY32		
162-169	LY33		
166-173	LY35		
172-179	LY34		
177-184	LY35		
183-189	LY34		
188-195	LY35		
194-200	LY34		
199-206	LY35		
205-211	LY34		
210-217	LY35		
216-222	444	2	LY34
221-228			LY35
227-233			LY34
232-239			LY35
238-244			LY34
243-250			LY35
249-255			LY34
254-261			LY35
260-266			LY34
265-271			LY35
270-277	LY34		
276-282	LY35		
281-288	LY34		
287-293	LY35		
292-299	LY34		
298-304	LY35		

KNCS 400-92			
GRIP RANGE Ø	Max Swing	Pos	Part No.
54-60	419	1	LY40
60-66			LY41
63-70			LY40
70-76			LY41
73-80			LY40
80-86			LY41
83-90			LY40
90-97			LY41
94-101			LY40
100-107			LY41
104-111			LY40
111-118			LY41
115-122			LY40
122-129			LY41
125-132			LY40
132-139			LY41
136-143			LY40
143-150			LY41
147-154			LY40
154-161			LY41
158-165	LY40		
165-172	LY41		
168-176	LY42		
175-182	LY43		
179-186	LY42		
186-193	LY43		
190-197	LY42		
197-204	LY43		
201-208	LY42		
208-215	LY43		
212-219	LY42		
219-226	LY43		
223-230	LY42		
230-237	LY43		
234-241	LY42		
241-248	LY43		
245-252	LY42		
252-259	LY43		
256-263	LY42		
263-270	LY43		
266-274	LY42		
273-281	LY43		
277-285	LY42		
284-292	LY43		
289-297	497	2	LY42
296-303			LY43
300-307			LY42
307-314			LY43
311-318			LY42
318-325			LY43
322-329			LY42
329-336			LY43
333-340			LY42
340-347			LY43
344-351	LY42		
351-358	LY43		
355-362	LY42		
362-369	LY43		

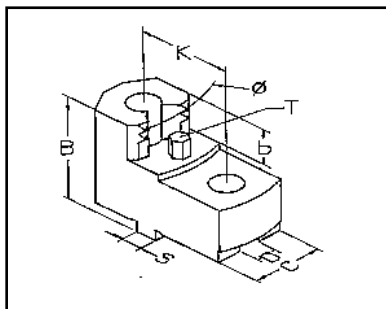
KNCS 500-128			
GRIP RANGE Ø	Max Swing	Pos	Part No.
87-99	515	1	LY50
95-104			LY51
102-112			LY50
108-118			LY51
116-125			LY50
122-131			LY51
129-139			LY50
135-145			LY51
143-153			LY50
149-158			LY51
157-166			LY50
164-174			LY52
171-181			LY53
178-188			LY52
185-194			LY53
191-201			LY52
198-208			LY53
205-215			LY52
212-222			LY53
219-229			LY52
226-236	LY53		
233-243	LY52		
243-253	637	2	LY52
250-260			LY53
257-267			LY52
264-274			LY53
271-281			LY52
278-288			LY53
285-294			LY52
291-301			LY53
298-308			LY52
305-315			LY53
312-322	637	2	LY52
319-329			LY53
326-336			LY52
333-343			LY53
340-350			LY52
347-357			LY53
354-364			LY52
361-371			LY53
368-378			LY52
375-385			LY53
382-392	LY52		
389-399	LY53		

BASE JAW POSITION

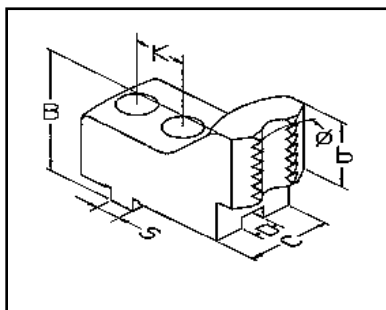


Adjustagrip Hard Top Jaws

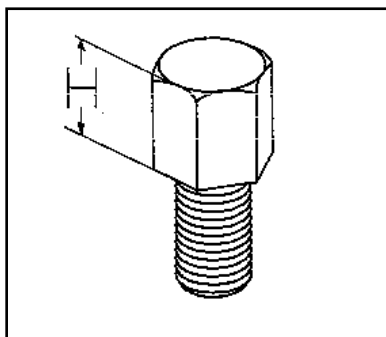
For Slot/Tenon Quick Jaw Change Chucks
To Suit SMW-Autoblok KNCS-N Chucks **Material: Steel: 590M17**
EXTERNAL GRIPPING



INTERNAL GRIPPING



BAR GRIPPING



WORKPIECE HEIGHT PINS

KNCS-N 315-91			
GRIP RANGE Ø	Max Swing	Pos	Part No.
46-52	356	1	LY30
50-57			LY31
56-62			LY30
61-67			LY31
66-72			LY30
71-78			LY31
76-83			LY30
81-88			LY31
87-94			LY30
92-99			LY31
98-104			LY30
103-110			LY31
108-115			LY30
114-120			LY31
119-126			LY30
124-131			LY31
128-135			LY34
133-140			LY35
139-146			LY34
144-151			LY35
150-157	LY34		
155-162	LY35		
161-167	LY34		
166-173	LY35		
171-178	LY34		
177-184	LY35		
182-189	LY34		
188-195	LY35		
193-200	LY34		
199-206	LY35		
204-211	LY34		
210-217	LY35		
215-222	444	2	LY34
221-227			LY35
226-233			LY34
231-238			LY35
237-244			LY34
242-249			LY35
248-255			LY34
253-260			LY35
259-266			LY34
264-271			LY35
270-277			LY34
275-282			LY35
281-288			LY34
286-293			LY35
292-299	LY34		
297-304	LY35		

KNCS-N 400-128			
GRIP RANGE Ø	Max Swing	Pos	Part No.
67-74	446	1	LY40
74-80			LY41
77-84			LY40
84-91			LY41
88-94			LY40
94-101			LY41
98-105			LY40
105-112			LY41
108-116			LY40
115-122			LY41
119-126			LY40
126-133			LY41
130-137			LY40
137-144			LY41
140-148			LY40
147-155			LY41
151-158			LY40
158-165			LY41
162-169			LY40
169-176			LY41
173-180	LY40		
180-187	LY41		
184-191	LY40		
191-198	LY41		
195-202	LY42		
201-209	LY43		
205-213	LY42		
212-220	LY43		
216-224	LY42		
223-231	LY43		
227-235	LY42		
234-241	LY43		
238-245	LY42		
245-252	LY43		
249-256	LY42		
256-263	LY43		
260-267	LY42		
267-274	LY43		
271-278	LY42		
278-285	LY43		
282-289	LY42		
289-296	LY43		
293-300	LY42		
300-307	LY43		
304-311	LY42		
311-318	LY43		
317-324	525	2	LY42
324-331			LY43
328-335			LY42
335-342			LY43
339-346			LY42
346-353			LY43
350-357			LY42
357-364			LY43
361-368			LY42
368-375			LY43
372-379			LY42
379-386			LY43
383-390			LY42
390-397			LY43

KNCS-N 500-155			
GRIP RANGE Ø	Max Swing	Pos	Part No.
87-98	636	1	LY50
94-103			LY51
102-111			LY50
107-117			LY51
115-124			LY50
121-130			LY51
128-138			LY50
134-144			LY51
142-152			LY50
148-157			LY51
156-165			LY50
163-173			LY52
170-180			LY53
177-187			LY52
184-193			LY53
190-200			LY52
197-207			LY53
204-214			LY52
211-221			LY53
218-228			LY52
225-235	LY53		
232-242	LY52		
239-249	LY53		
246-256	LY52		
253-263	LY53		
260-270	LY52		
267-277	LY53		
274-284	LY52		
281-290	LY53		
288-297	LY52		
294-304	LY53		
301-311	LY52		
308-318	LY53		
318-328	836	2	LY51
326-336			LY53
333-343			LY52
340-350			LY53
347-357			LY52
354-364			LY53
361-371			LY52
368-378			LY53
375-385			LY52
382-392			LY53
389-399			LY52
396-406			LY53
403-413			LY52
410-420			LY53
417-427			LY52
424-434			LY53
431-441			LY52
438-448			LY53
445-455			LY52
452-462			LY53
459-469	LY52		
466-476	LY53		
473-483	LY52		
480-490	LY53		
487-497	LY52		
494-504	LY53		
501-511	LY52		
508-518	LY53		