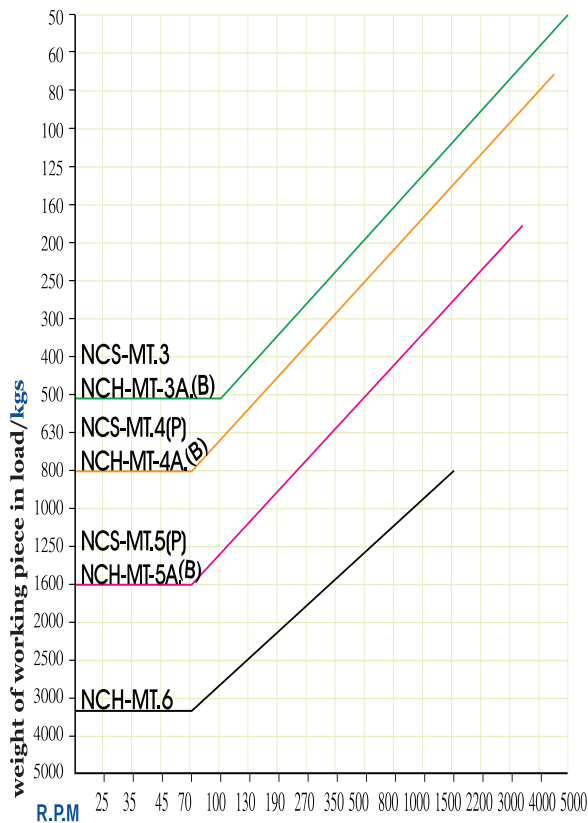


HIGH PRECISION LIVE CENTERS

HIGH SPEED, WATER PROOF TYPE

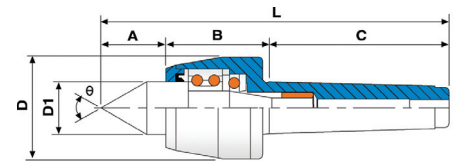
NCH LIVE CENTER



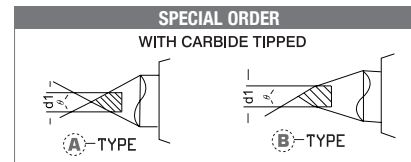
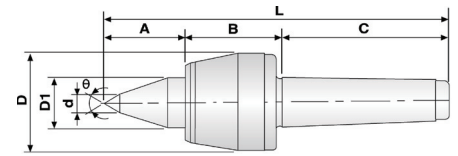
1. Center shaft is made of alloy steel and hardened through vacuum heat treatment to provide higher rigidity HRC 60± 1°.
2. Center is fitted with dual ball bearing, thrust bearing and needle roller bearing assembly.
3. Applicable to high speed lathes and CNC lathes with heavy loads.



A - TYPE



B - TYPE

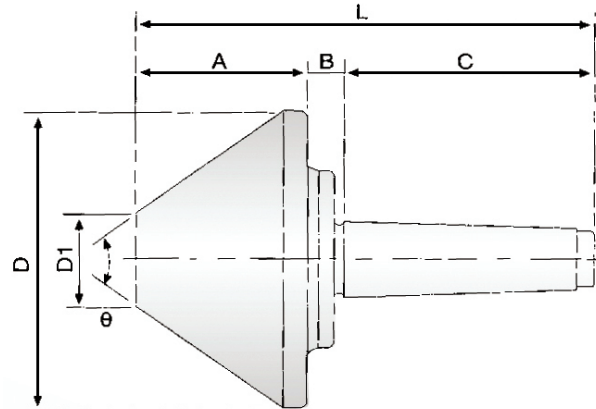


Order No.	Model	A mm/in	B mm/in	C mm/in	D mm/in	D1 mm/in	d mm/in	L mm/in	d1 mm/in	Accuracy mm/in	Max R.P.M.	θ
570-003	NCH-MT.3A	39/1.5354	55/2.1653	86/3.3858	53/2.0866	30/1.1811	-	180/7.0866	12/0.4724	0.003/0.00012	5000	60°
570-004	NCH-MT.4A	42/0.1575	62/2.4409	108/4.2519	63/2.4803	32/1.2598	-	208/8.1889	12/0.0393	0.003/0.00012	4500	60°
570-005	NCH-MT.5A	49/1.9291	71/2.7952	136/5.3543	83/3.2677	40/1.5748	-	256/10.0787	18/0.7086	0.003/0.00012	3500	60°
570-006	NCH-MT.6A	80/3.1496	110/4.3307	189/7.4409	128/5.0393	70/2.7559	-	379/14.9212	-	0.008/0.00031	1500	60°
570-023	NCH-MT.3B	45/1.7716	55/2.1653	86/3.3858	53/2.0866	30/1.1811	10/0.3937	186/7.3228	12/0.4724	0.003/0.00012	5000	60°
570-024	NCH-MT.4B	52/2.0472	62/2.4409	108/4.2519	63/2.4803	32/1.2598	12/0.4724	218/8.5267	12/0.4724	0.003/0.00012	4500	60°
570-025	NCH-MT.5B	59/2.3228	71/2.7952	136/5.3543	83/3.2677	40/1.5748	14/0.5511	266/10.4724	18/0.7086	0.003/0.00012	3500	60°

BULL NOSE LIVE CENTERS

APPLICABLE FOR PIPE TURNING OPERATIONS

BC LIVE CENTER



1. The tip of bull nose center uses Cr-Mo steel and hardened to (HRC 60° ± 1°).
2. The center uses a combination of taper roller bearing and ball bearing.
3. Applicable for pipe turning operations.

Order No.	Model	A mm/in	B mm/in	C mm/in	D mm/in	D1 mm/in	L mm/in	Accuracy mm/in	Max R.P.M.	Load Weight kgs	θ
575-100	BC 63-MT.2	46/1.8110	17/0.6692	69/2.7165	63/2.4803	12/0.4724	132/5.1968	0.005/0.0001	4000	RPM100=200kgs	60°
575-105	BC 63-MT.3	46/1.8110	17/0.6692	86/3.385	63/2.4803	12/0.4724	149/5.8661	0.005/0.0001	4000	RPM100=200kgs	60°
575-100	BC 78-MT.3	52/2.0472	18/0.7086	86/3.385	78/3.0708	15/0.5905	156/6.1417	0.005/0.0001	3300	RPM100=400kgs	70°
575-107	BC106-MT.3	59/2.3228	16/0.6299	86/3.385	106/4.1732	25/0.9842	161/6.3385	0.005/0.0001	3000	RPM100=500kgs	70°
575-110	BC 63-MT.4	46/1.8110	17/0.6692	108/4.2519	63/2.4803	12/0.4724	171/6.7322	0.005/0.0001	4000	RPM100=200kgs	60°
575-111	BC 78-MT.4	52/2.0472	18/0.7086	108/4.2519	78/3.0708	15/0.5905	178/7.0078	0.005/0.0001	3300	RPM100=400kgs	70°
575-112	BC106-MT.4	59/2.3228	16/0.6299	108/4.2519	106/4.1732	25/0.9842	183/7.2047	0.005/0.0001	3300	RPM100=500kgs	75°
575-113	BC128-MT.4	73/2.8740	12/0.4724	108/4.2519	128/5.0393	40/1.5748	193/7.5984	0.005/0.0001	2000	RPM100=650kgs	70°
575-114	BC156-MT.4	88/3.4645	12/0.4724	108/4.2519	156/6.1417	45/1.7716	208/8.1889	0.008/0.0003	1900	RPM100=800kgs	70°
575-115	BC206-MT.4	98/3.8582	12/0.4724	108/4.2519	206/8.1102	81/3.1889	218/8.5826	0.008/0.0003	1500	RPM100=1300kgs	70°
575-116	BC258-MT.4	107/4.2125	13/0.5118	108/4.2519	258/10.1574	92/3.6220	228/8.9763	0.008/0.0003	1200	RPM100=2000kgs	80°
575-120	BC128-MT.5	73/2.8740	12/0.4724	136/5.3543	128/5.0393	40/1.5748	221/8.9370	0.005/0.0001	2000	RPM100=650kg	70°
575-121	BC156-MT.5	88/3.4645	12/0.4724	136/5.3543	156/6.1417	45/1.7716	236/9.2913	0.008/0.0003	1900	RPM100=800kgs	70°
575-122	BC206-MT.5	98/3.8582	12/0.4724	136/5.3543	206/8.1102	81/3.1889	246/9.6850	0.008/0.0003	1500	RPM100=1600kgs	70°
575-123	BC258-MT.5	107/4.2125	13/0.5118	136/5.3543	258/10.1574	92/3.6220	256/10.0787	0.008/0.0003	1200	RPM100=2200kgs	80°
575-124	BC306-MT.5	107/4.2125	30/1.2598	136/5.3543	306/12.0472	120/4.7244	273/10.7480	0.01/0.00039	1000	RPM100=3000kgs	90°
575-125	BC206-MT.6	98/3.8582	12/0.4724	190/7.4803	206/8.1102	81/3.1889	300/11.8110	0.008/0.0003	1500	RPM100=2000kgs	70°
575-126	BC258-MT.6	107.4.2125	13/0.5118	190/7.4803	258/10.1574	92/3.6220	310/12.2047	0.008/0.0003	1200	RPM100=2500kgs	80°
575-127	BC306-MT.6	107/4.2125	30/1.2598	190/7.4803	306/12.0472	120/4.7244	327/12.8740	0.01/0.00039	1000	RPM100=3000kgs	90°

Distributed in USA by:



3606 California Rd., Orchard Park, NY, 14127, USA
 Phone: 716-662-6818 • 1-800-688-6810 • Fax: 1-716-662-8965
 E-mail: tools@techleader.com
 Web: www.TechLeader.com

Contact your local distributor:

Prices in US dollars. FOB: Orchard Park, NY.
 Prices and specifications are subject to change without notice.