

ETS High Precision Self-Centering Collet Nuts

NUTS

Chuck Size	Order No.	A ₁ Ø (mm)	B (mm)	C	S (mm)
ETS 12 (Fig.1)	112-000-N	19	15	M14 x 0.75P	17
ETS 14 (Fig.2)	114-000-N	22	11.2	M17 x 1P	—
ETS 16 (Fig.1)	116-000-N	26.7	15	M20 x 1P	24
ETS 16 (Fig.2)	116-000-N1	32	15	M22 x 1.5P	—
ETS 20 (Fig.2)	120-000-N	35	16.5	M25 x 1.5P	—
ETS 25 (Fig.2)	125-000-N	42	18.5	M32 x 1.5P	—
ETS 32 (Fig.2)	132-000-N	50	22	M40 x 1.5P	—
ETS 40 (Fig.2)	140-000-N	63	25	M50 x 1.5P	—

Fig. 1

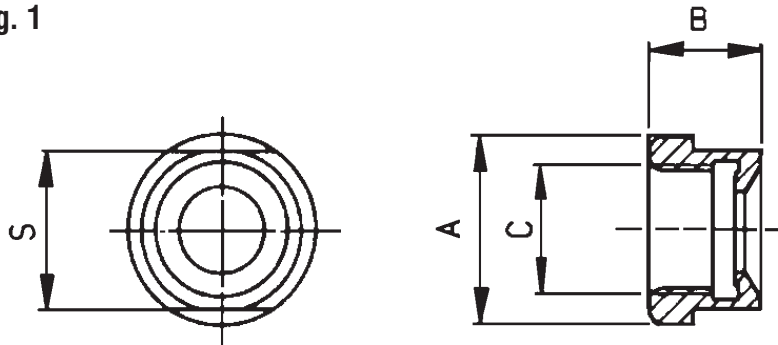


Fig. 2

