



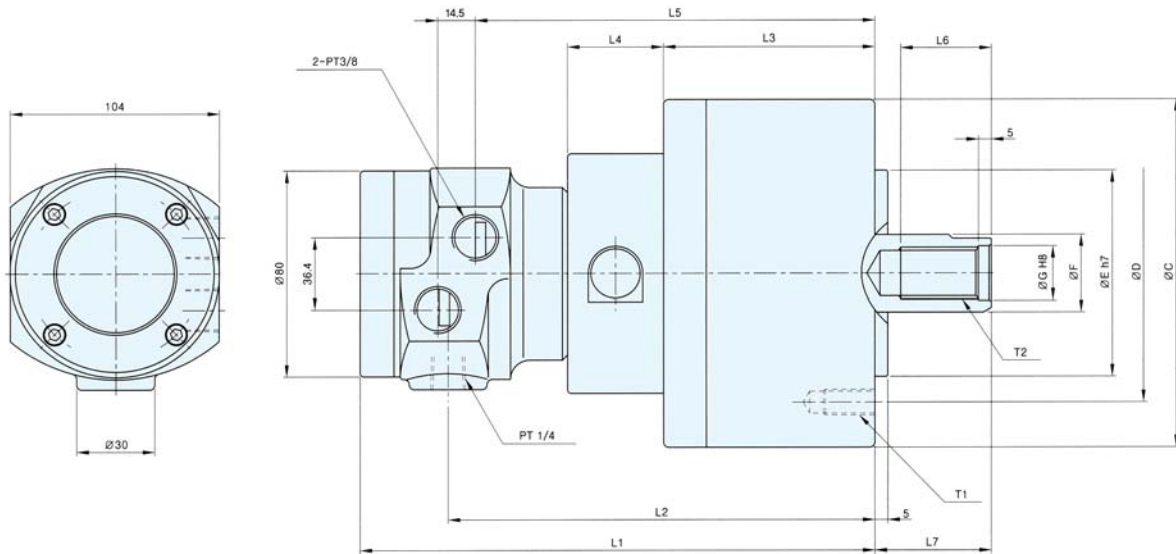
**1 • Safety Guaranteed** It contains check valves so that pulling force is kept for a certain time upon power failure, securing safety. **2 • Easy Repair & Check** Thanks to easy access of check valves from outside, it is possible to repair and check them while cylinder is attached to the equipment. **3 • High Performance and High Quality** It contains check valves in YAS cylinder, having excellent performance and quality, and its parts are compatible with YAS.

**1 • 保障安全** : 此回轉油缸帶有單向閥, 當斷電時, 壓力仍可保持一段時間, 因此確保安全. **2 • 便于檢測和維修** : 由於從外部便于操作單向閥, 當回轉油缸安裝到設備上後仍便于修理和檢測. **3 • 性能優, 質量好** : 此型號的回轉油缸是帶單向閥的YAS型回轉油缸, 此回轉油缸性能和質量出色, 它的附件與YAS型兼容.

**1 • 安全確保 2 • 補修點檢容易 3 • 高性能 高品質**

**1 • 안전 확보 2 • 보수점검이 용이 3 • 고성능 · 고품질**

### Outward Drawing/外型圖/外形圖/외형도



### Dimension / 尺寸 / 寸法表 / 치수표

Model/형식	Item/항목	C	D	E	F	G	L1	L2	L3	L4	L5	L6	L7 max	L7 min	T1	T2
YASC-100		135	100	80	30	21	198.5	164.5	81.5	37	154	35	45	25	6-M10X19	M20XP2.5
YASC-125		160	130	110	35	25	208.5	174.5	91.5	37	164	40	50	25	6-M12X22	M24XP3.0
YASC-150		185	130	110	45	30.5	215.5	181.5	98.5	37	171	45	55	25	6-M12X20	M30XP3.5
YASC-200		245	145	120	55	37	239	205	122	37	194.5	60	69	34	6-M16X29	M36XP4.0

### Specifications / 規格 / 仕様表 / 사양표

Spec. 사양 Model/형식	Order NO. 주문번호	Cylinder Dia 실린더내경 mm	Piston stroke 피스톤스트로크 mm	Piston surface area 피스톤 단면적 cm <sup>2</sup>		Max. Draw bar pull 실린더 추력 KN(kgf)	
				Extend 압축	Retract 인축	Extend 압축	Retract 인축
YASC-100	2ASC10	105	20	86.5	79.5	31.8(3244)	29.3(2989)
YASC-125	2ASC12	130	25	1325	1230	48.8(4978)	45.3(4621)
YASC-150	2ASC15	150	30	1760	1600	64.8(6610)	60.0(6120)
YASC-200	2ASC20	205	35	3300	3060	121.6(12404)	112.8(11505)

Spec. 사양 Model/형식	Max. operating pressure 최고 사용 유압력 kgf/cm <sup>2</sup>	Max. permissible speed 최고 사용 회전수 r.p.m.(min <sup>-1</sup> )	Total leakage 총 드레인량 l/min	Weight 중량 kg	GD <sup>2</sup> Moment of inertia N·m <sup>2</sup> (kgf·m <sup>2</sup> )	Matching chuck 적용척
YASC-100	40.8	6000	1.0	7.0	0.49(0.05)	CAS-06
YASC-125	40.8	6000	1.0	9.8	0.88(0.09)	CAS-08, CAS-10
YASC-150	40.8	5500	1.0	13.3	1.47(0.15)	CAS-10, CAS-12
YASC-200	40.8	5500	1.0	21.7	3.62(0.37)	CAS-15 이상